

**“Japan Highlights Travel”
Portal site on tourism along the Tokaido Shinkansen line is now online**

Japan’s main transportation artery connecting three major metropolitan areas (Tokyo, Nagoya and Osaka), since ancient times “Tokaido” has been instrumental in ensuring the advance of human, material and cultural exchanges. Along the Tokaido Shinkansen railway line, touristic resources that epitomize Japanese history, culture, industry and nature can be found.

In commemoration of the Tokaido Shinkansen's 50th anniversary, we have set up portal site “Japan Highlights Travel”, compiling information on tourism along the Tokaido Shinkansen line. In view of the increasing popularity of international travel to Japan, we hope that this will serve to help not only Japanese tourists, but also foreign nationals rediscover the appeal of the Tokaido area.

1. Site name

Japan Highlights Travel

2. Domain name

<http://japan-highlightstravel.com>

3. Site features

- Provides an introduction on touristic spots close to each station on the Tokaido Shinkansen line and others serviced by Central Japan Railway Company.
- Can be searched by area or based on categories such as tourism, gourmet, shopping, hot springs and events.
- Offers special feature articles discussing the characteristics of different areas and providing recommendations.
- Available in Japanese and in English.

* We will be gradually increasing the number of touristic spots covered.

* See the appendix for images of the site.

4. Cooperating organizations

Prefectures: Shizuoka prefecture, Gifu prefecture

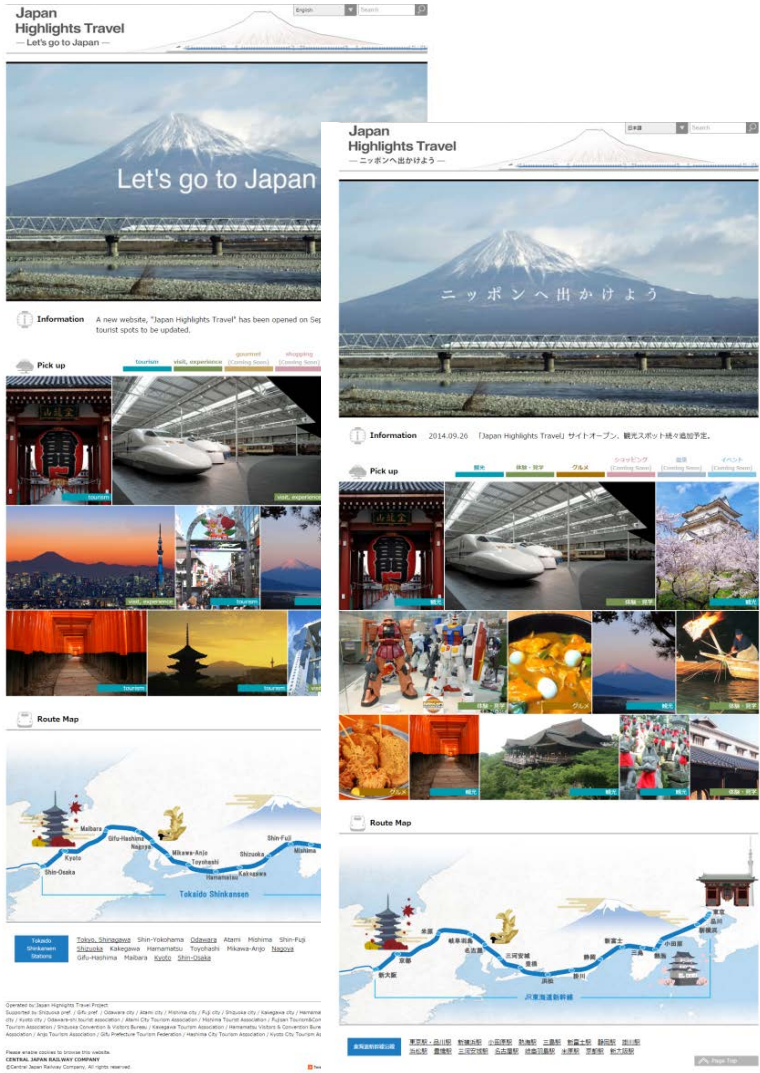
Municipalities: Odawara, Atami, Mishima, Fuji, Shizuoka, Kakegawa, Hamamatsu, Toyohashi, Anjo, Hashima, Kyoto

Touristic organizations: Odawara-shi Tourist Association, Atami City Tourism Association, Mishima Tourist Association, Fujisan Tourism & Communication Bureau, Shizuoka Prefectural Tourism Association, Shizuoka Convention & Visitors Bureau, Kakegawa Tourism Association, Hamamatsu Visitors & Convention Bureau, Toyohashi Visitors & Convention Association, Anjo Tourism Association, Gifu Prefecture Tourism Federation, Hashima City Sightseeing Association, Kyoto City Tourism Association

* Organizations working with us as of September 26, 2014. We will continue working to increase the number of partner municipalities, tourism associations, and other organizations along the railway line.

Site images

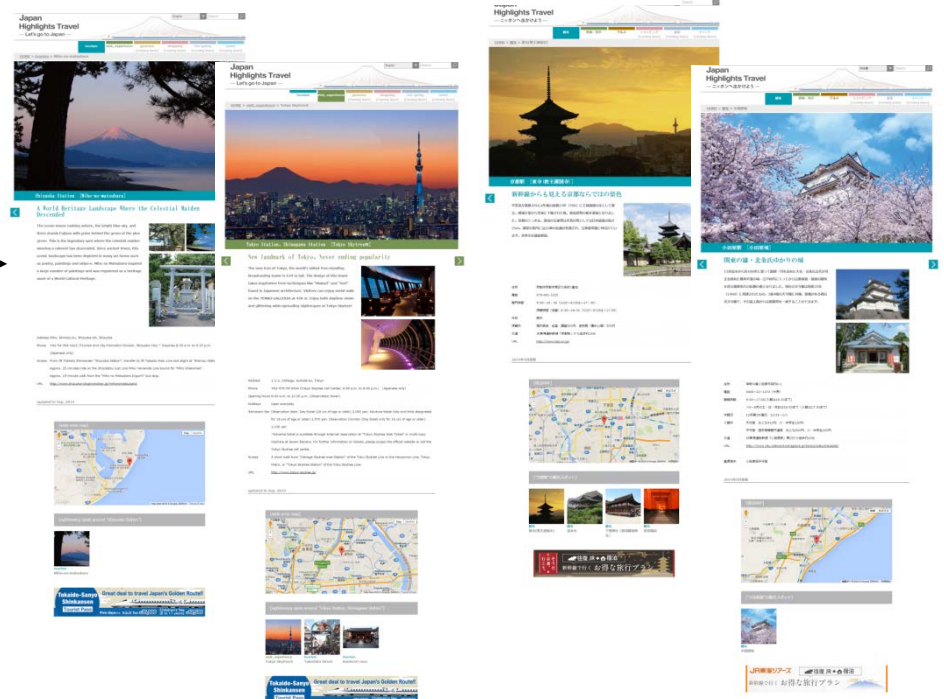
Home page



<English version>

<Japanese version>

Touristic spot information



<English version>
* Left: Mihonomatsubara Right: Tokyo Skytree

<Japanese version>
* Left: Touji Temple Right: Odawara Castle

Special feature article page



* The special feature article page will be online from October onwards. Images are for reference