



August 28, 2014

Central Japan Railway Company

West Japan Railway Company

## **Launch of the “Tourist Pass” for foreign visitors to Japan that enables use of all trains on the Tokaido-Sanyo Shinkansen to visit wayside tourist spots carefree**

In commemoration of the 50th anniversary of the start of operation of the Tokaido Shinkansen, we are launching our new “Tourist Pass” for use by foreign visitors to Japan. The “Tourist Pass” is a convenient package that includes use of the Tokaido-Sanyo Shinkansen as well as access to attractive tourist facilities and transportation means along the Shinkansen.

We hope that this package will enable foreign visitors to visit the sites along the Tokaido-Sanyo Shinkansen more casually while enjoying the convenience and comfort that the Shinkansen, which was the first high-speed rail in the world, provides.

◆ **Product Name:** Tokaido-Sanyo Shinkansen Tourist Pass

◆ **Product Characteristics:**

- Intended for use by foreigners visiting Japan for tourism
- Includes access to attractive wayside tourist facilities and convenient means of transportation (Sightseeing facilities such as the “SCMAGLEV and Railway Park” (Nagoya), “Floating Garden” (Osaka), and “Okayama Castle” (Okayama), as well as use of the Shin-Fuji Station~Kawaguchiko/Mt. Fuji Station bus convenient for accessing the World Heritage Mt. Fuji.)
- Unlimited use of non-reserved seats on all trains on the Tokaido-Sanyo Shinkansen (Reserved seats on regular trains can be used up to four times)

\*Conventional line access is not included except within Osaka City

◆ **Term of Use:** Wednesday, October 1, 2014 through Tuesday, June 30, 2015

(To go on sale at participating overseas travel agencies from Monday, September 1, 2014)

◆ **Validity Period:** 5 consecutive days

◆ **Fees: Adult: 35,000 yen, Children: 17,500 yen** \*Children over six and less than 11 years of age

The launch will also coincide with the launch of the Takayama-Hokuriku Area Tourist Pass that enables convenient access from Nagoya or Osaka to tourist spots popular with overseas visitors in recent years, such as Takayama, Shirakawa-go, and Kanazawa, etc., via conventional line limited express trains and buses.

\* Please see the attachments or attached charts for details

## Product Overview

**1. Product Details****◆Tokaido-Sanyo Shinkansen Tourist Pass**

- Unlimited use of non-reserved seats on all trains on the Tokaido-Sanyo Shinkansen (between Tokyo Station and Hakata Station) as well as on conventional JR line express trains and ordinary trains within Osaka City. Reserved seats on ordinary trains can also be used up to four times.
- Access to wayside sightseeing facilities and other means of transportation (refer to attached chart)
- Validity period: Five consecutive days
- Price: Adult: 35,000JPY, Children: 17,500JPY \*Children over six and less than 11 years of age

**◆Takayama-Hokuriku Area Tourist Pass**

- Unlimited use of non-reserved seats in ordinary cars on JR Limited express, express and ordinary trains (excluding the Shinkansen and sleeper trains) between Nagoya and Takayama (via the Tokaido and Takayama lines) and Osaka and Kanazawa (Hokuriku, Kosei and Tokaido lines). Reserved seats in ordinary cars can be used up to four times.
- Unlimited use of buses within Takayama City and among Takayama~Shirawa-go~Kanazawa (Refer to the attached chart)
- Validity period: Five consecutive days
- Fees: Adults: 10,500JPY, Children: 5,250JPY \*Children over six and less than 11 years of age

**2. Method of Purchase and Exchange**

- These products may be purchased only by customers that have a passport issued by a nation other than Japan and whose visa status in Japan is “Short-term Stay”.
- After purchase at participating overseas travel agencies (\*1), the customer will receive an exchange ticket (MCO) that can be exchanged for the tourist pass after entry into Japan at the following JR Central and JR West stations or at designated branches of JR Tokai Tours, Inc. (Passports must be presented)  
(\*1) Overseas participate in travel agencies: overseas branches of the following participating companies or travel agencies designated by these companies. JTB, Nippon Travel Agency, Kintetsu International, Toptour Corporation, Japan Airlines, JALPAK (listed in random order)

**【Locations at which to exchange tourist passes】**

- JR Central (10 locations): Tokyo, Shinagawa, Shin-Yokohama, Odawara, Mishima, Shizuoka, Hamamatsu, Nagoya, Kyoto, Shin-Osaka
- JR West (10 locations): Kyoto, Shin-Osaka (including the Travel Corners), Osaka, Tennoji, Kansai-airport, Shin-Kobe, Okayama, Hiroshima, Kokura, Hakata  
\* Only the Tokaido-Sanyo Shinkansen Tourist Pass can be exchanged at the underlined locations
- JR Tokai Tours (3 locations): Tokyo, Shinagawa, Shin-Yokohama  
\* Reservations for reserved seats can be made at all JR Central and JR West service counters in addition to the locations mentioned above

**3. Period of Use**

Wednesday, October 1, 2014 through Tuesday, June 30, 2015

(Exchange of MCO and Tourist Pass can only be done between Wednesday, October 1, 2014 and Friday, June 26, 2015)

\*(To go on sale at participating overseas travel agencies from Monday, September 1, 2014)

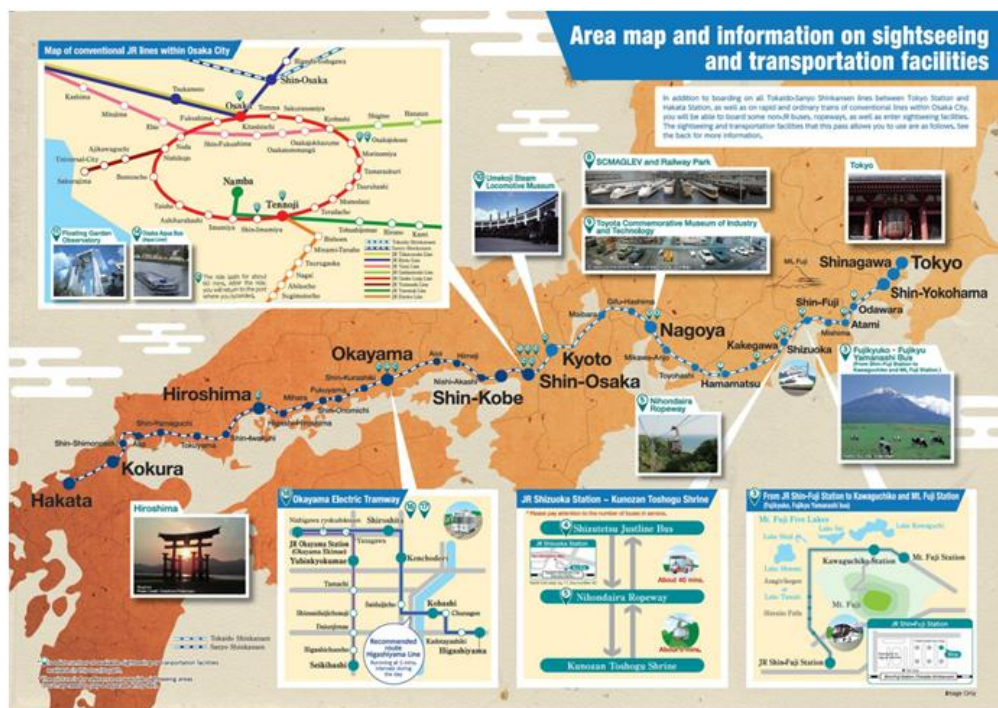
**4. Dedicated website**

Product details are continuously updated on the following dedicated website. (Localized into the following languages: Japanese, English, traditional Chinese, simplified Chinese, Korean)

URL: <http://touristpass.jp>

## ◆Sightseeing and transportation facilities available with the Tokaido-Sanyo Shinkansen Tourist Pass (except JR lines)

Nearest Shinansen Stations	Sightseeing and transportation facilities
<b>Odawara</b>	① Odawara Castle (URL : <a href="http://www.city.odawara.kanagawa.jp/kanko/odawaracastle/">http://www.city.odawara.kanagawa.jp/kanko/odawaracastle/</a> )
<b>Atami</b>	② MOA Museum of Art (URL : <a href="http://moart.or.jp/">http://moart.or.jp/</a> )
<b>Shin-Fuji</b>	③ Fujikyuko-Fujikyū Yamanashi Bus (from Shin-Fuji Sta. to Kawaguchiko and Mt. Fuji sta.) (URL : <a href="http://bus.fujikyū.co.jp/index.html">http://bus.fujikyū.co.jp/index.html</a> )
<b>Shizuoka</b>	④ Shizutetsu Justline Bus (from Shizuoka sta. to the Nihondaira Ropeway) (URL : <a href="http://www.justline.co.jp/">http://www.justline.co.jp/</a> )
	⑤ Shizutetsu: Nihondaira Ropeway (URL : <a href="http://www.shizutetsu.co.jp/park/">http://www.shizutetsu.co.jp/park/</a> )
<b>Kakegawa</b>	⑥ Kakegawakachouen (URL : <a href="http://k-hana-tori.com">http://k-hana-tori.com</a> )
<b>Hamamatsu</b>	⑦ Hamamatsu Castle (URL : <a href="http://www.hamamatsu-navi.jp/shiro/">http://www.hamamatsu-navi.jp/shiro/</a> )
<b>Nagoya</b>	⑧ SCMAGLEV and Railway Park (URL : <a href="http://museum.jr-central.co.jp/">http://museum.jr-central.co.jp/</a> )
	⑨ Toyota Commemorative Museum of Industry and Technology (URL : <a href="http://www.tcm.it.org">http://www.tcm.it.org</a> )
<b>Kyoto</b>	⑩ Umeoji Steam Locomotive Museum (URL : <a href="http://www.mtm.or.jp/uslm/">http://www.mtm.or.jp/uslm/</a> )
<b>Shin-Osaka</b>	⑪ Floating Garden Observatory (URL : <a href="http://www.skybldg.co.jp/">http://www.skybldg.co.jp/</a> )
※Conventional JR lines available	⑫ Osaka Castle (URL : <a href="http://www.osakacastle.net/">http://www.osakacastle.net/</a> )
	⑬ Tsutenkaku (URL : <a href="http://www.tsutenkaku.co.jp/">http://www.tsutenkaku.co.jp/</a> )
	⑭ Osaka Aqua Bus: Aqua Liner (URL : <a href="http://suijo-bus.jp/cruise/aqualiner.aspx">http://suijo-bus.jp/cruise/aqualiner.aspx</a> )
	⑮ Tennoji Zoo (URL : <a href="http://www.jazga.or.jp/tennoji/">http://www.jazga.or.jp/tennoji/</a> )
<b>Okayama</b>	⑯ Okayama Korakuen Garden (URL : <a href="http://www.okayama-korakuen.jp/">http://www.okayama-korakuen.jp/</a> )
	⑰ Okayama Castle (URL : <a href="http://www.okayama-kanko.net/ujo/index.html">http://www.okayama-kanko.net/ujo/index.html</a> )
	⑱ Okayama Electric Tramway: Higashiyama/Sekibashi Line (URL : <a href="http://www.okayama-kido.co.jp/tramway/">http://www.okayama-kido.co.jp/tramway/</a> )
<b>Hiroshima</b>	⑲ Hiroshima Castle (URL : <a href="http://rijo-castle.jp">http://rijo-castle.jp</a> )



◆ Available Transportation means for the Takayama-Hokuriku Area Tourist Pass

- Conventional JR lines between Nagoya Station and Takayama Station, Osaka Station and Kanazawa Station, including non-reserved seats on limited express trains, ordinary express trains, and ordinary trains (Shinkansen and sleeper trains are not included).
  - \*Reserved seating on the limited express train is also available up to four times.
- High-speed Bus “Shirakawa-go/Kanazawa Line” (Nohi Bus and Hokutetsu Bus) operating among JR Takayama Station, Shirakawa-go and JR Kanazawa Station.
  - \*Most buses will need booking by phone in advance.
- Sarubobo Bus within Takayama City, arriving and departing JR Takayama Station (circulates between Hida- Folk Village, HidaTakayama Museum of Art etc.)

**Map of high-speed buses and limited express bus routes**

**Area map**

You will be able to use non-reserved seats of ordinary cars of JR limited express trains, ordinary express trains and ordinary trains between Nagoya Station and Takayama Station via the Tokaido and Takayama lines) and between Kanazawa Station and Osaka Station (via the Hokuriku, Kosei and Tokaido lines). You can also use the Nohi Bus and Hokutetsu Bus between Takayama and Kanazawa, as well as the Sarubobo Bus within the Takayama City. The JR lines and buses that this pass allows you to use are as follows.

**Shirakawa-go/Kanazawa Line**

**Takayama ⇄ Shirakawa-go ⇄ Kanazawa**

Shirakawa-go	Takayama	Kanazawa
Shirakawa-go	08:00	08:30
Takayama	08:30	09:00
Kanazawa	09:00	09:30
Shirakawa-go	09:30	10:00
Takayama	10:00	10:30
Kanazawa	10:30	11:00
Shirakawa-go	11:00	11:30
Takayama	11:30	12:00
Kanazawa	12:00	12:30
Shirakawa-go	12:30	13:00
Takayama	13:00	13:30
Kanazawa	13:30	14:00
Shirakawa-go	14:00	14:30
Takayama	14:30	15:00
Kanazawa	15:00	15:30
Shirakawa-go	15:30	16:00
Takayama	16:00	16:30
Kanazawa	16:30	17:00
Shirakawa-go	17:00	17:30
Takayama	17:30	18:00
Kanazawa	18:00	18:30
Shirakawa-go	18:30	19:00
Takayama	19:00	19:30
Kanazawa	19:30	20:00

**Kanazawa ⇄ Shirakawa-go ⇄ Takayama**

Kanazawa	Shirakawa-go	Takayama
Kanazawa	08:00	08:30
Shirakawa-go	08:30	09:00
Takayama	09:00	09:30
Kanazawa	09:30	10:00
Shirakawa-go	10:00	10:30
Takayama	10:30	11:00
Kanazawa	11:00	11:30
Shirakawa-go	11:30	12:00
Takayama	12:00	12:30
Kanazawa	12:30	13:00
Shirakawa-go	13:00	13:30
Takayama	13:30	14:00
Kanazawa	14:00	14:30
Shirakawa-go	14:30	15:00
Takayama	15:00	15:30
Kanazawa	15:30	16:00
Shirakawa-go	16:00	16:30
Takayama	16:30	17:00
Kanazawa	17:00	17:30
Shirakawa-go	17:30	18:00
Takayama	18:00	18:30
Kanazawa	18:30	19:00
Shirakawa-go	19:00	19:30
Takayama	19:30	20:00

**Sarubobo Bus service route in Takayama City**

Hida Takayama Museum of Art  
Hida Folk Village  
Hida Takayama Festival Forest  
Takayama Station

\* The picture is for reference on wayside sight-seeing areas (you may need to pay a separate entry fee).

Image Only