

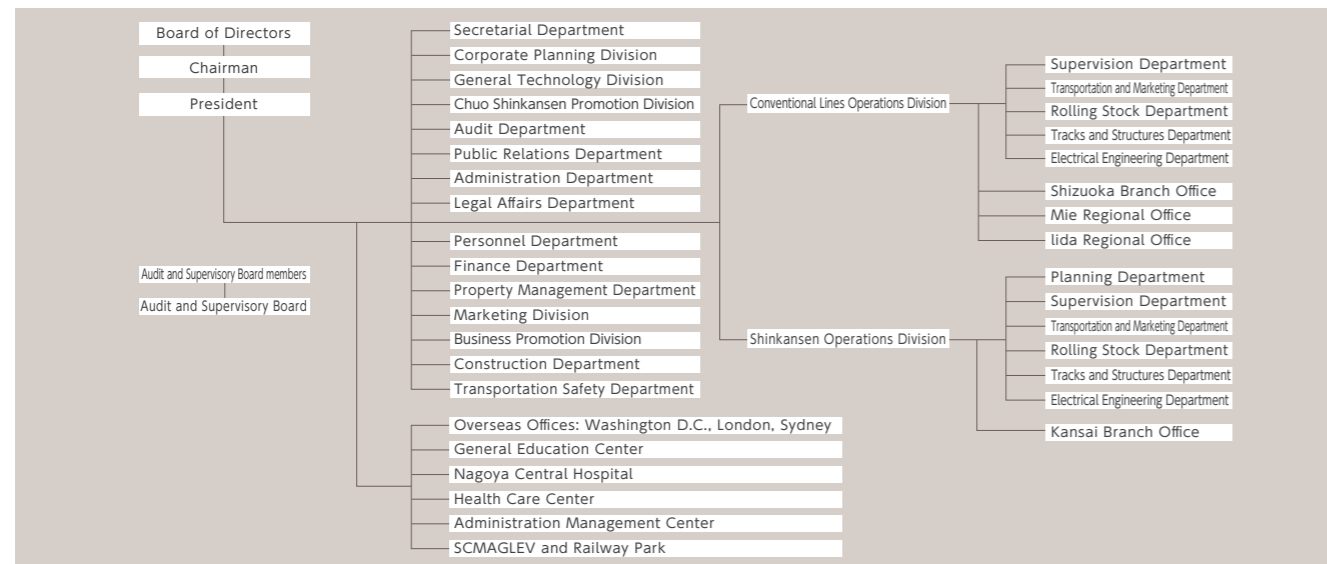
Corporate Data

Company Profile

Name	CENTRAL JAPAN RAILWAY COMPANY (JR Central) Central Japan Railway Company (JR Central)
Established	1-Apr-87
Business activities	Railways business and related businesses
Key data	(As of the end of March 2023)
Capital	112.0 billion yen
Operating revenues	1,143.3 billion yen
Number of shares outstanding	206 million
Share listings	Nagoya and Tokyo Stock Exchanges
Number of shareholders	125,589
Number of employees	18,727
Operating kilometers	1,970.8km
Number of stations	405
Number of rolling stock	4,879
Double- and multi-tracked sections	55.1%(1,086.8km)
Electrified sections	76.7%(1,511.0km)
CTC system adoption rate	97.5%(1,922.3km)
Automatic signaling system adoption rate	97.8%(1,927.3km)

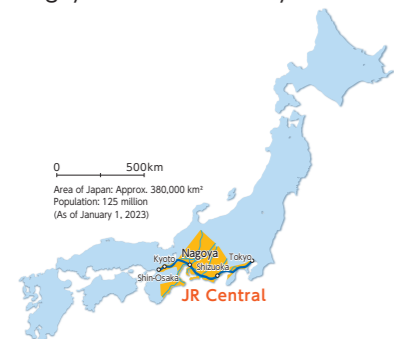
Head office and other main offices	Head office	JR Central Towers, 1-1-4 Meieki, Nakamura-ku, Nagoya-shi, Aichi 450-6101, Japan
	Head office (in Tokyo)	JR Central Shinagawa Building A Wing, 2-1-85 Konan, Minato-ku, Tokyo 108-8204, Japan
	Conventional Lines Operations Division	JR Central Taiko Building, 1-3-4 Meieki, Nakamura-ku, Nagoya-shi, Aichi 453-8520, Japan
	Shizuoka Branch Office	4 Kurogane-cho, Aoi-ku, Shizuoka-shi, Shizuoka 420-0851, Japan
	Mie Regional Office	Ust-Tsu 12F, 700 Hadokoro-cho, Tsu-shi, Mie 514-0009, Japan
	Iida Regional Office	5356 Kami-Iida, Iida-shi, Nagano 395-0000, Japan
	Shinkansen Operations Division	Marunouchi Chuo Building, 1-9-1 Marunouchi, Chiyoda-ku, Tokyo 100-0005, Japan
	Kansai Branch Office	Shin-Osaka Hankyu Building 10-11F, 1-1-1 Miyahara, Yodogawa-ku, Osaka-shi, Osaka 532-0003, Japan
	Washington D.C. Office	805 15th Street, N.W., Suite 810, Washington, DC 20005, U.S.A.
	London Office	6th Floor, 4 Eastcheap, London, EC3M 1AE, U.K.
	Sydney Office	Suite 5.01A, Level5, 20 Hunter Street, Sydney, NSW 2000, Australia

Organization Chart



Operating Areas

JR Central operates the Tokaido Shinkansen, the main transportation artery linking Tokyo, Nagoya and Osaka, and a network of 12 conventional lines centered on the Nagoya and Shizuoka City areas.

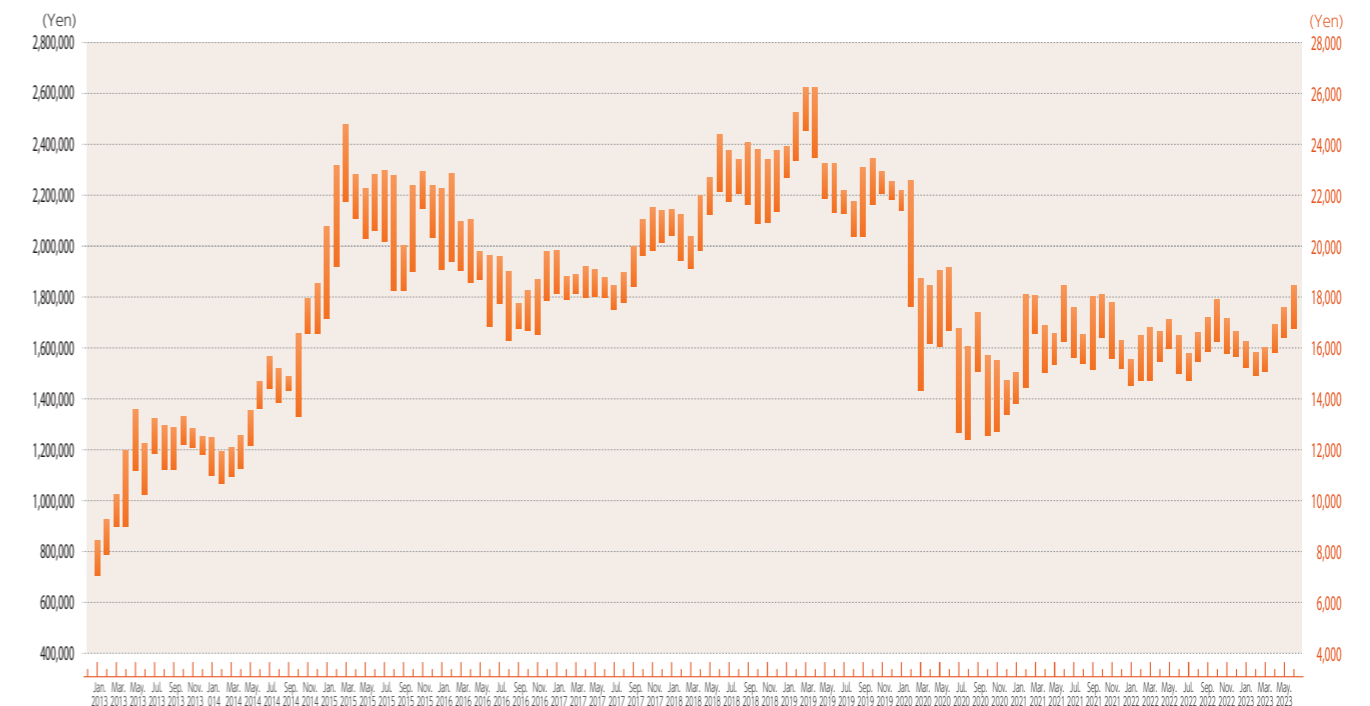


Operating kilometers by line

Tokaido Shinkansen	552.6km
Conventional lines	
Tokaido Line	360.1km
Gotemba Line	60.2km
Minobu Line	88.4km
Iida Line	195.7km
Taketoyo Line	19.3km
Takayama Line	189.2km
Chuo Line	174.8km
Taita Line	17.8km
Kansai Line	59.9km
Kisei Line	180.2km
Meisho Line	43.5km
Sangu Line	29.1km
Conventional lines total	1,418.2km
Total	1,970.8km

Stock Information

JR Central's stock price



* Stated range of highs and lows for each month.
Note: On October 1, 2012, the Company implemented a 100-for-1 stock split for its ordinary stock and employed a share unit system by which one share unit equals 100 shares. Also, effective October 1, 2023, the Company executed a 5-for-1 stock split for its ordinary stock.

Major shareholders

Name	Number of shares held	Percentage of total shares outstanding (excluding treasury stock)
The Master Trust Bank of Japan, Ltd. (Trust Account)	23,378,700	11.87%
Custody Bank of Japan, Ltd. (Trust Account)	12,317,400	6.25%
Mizuho Bank, Ltd.	7,832,300	3.98%
The Nomura Trust and Banking Co., Ltd. (Holder in Retirement Benefit Trust for MUFG Bank, Ltd.)	7,125,000	3.62%
MUFG Bank, Ltd.	5,478,100	2.78%
Nippon Life Insurance Company	5,000,000	2.54%
The Norinchukin Bank	3,350,000	1.70%
JR Central Employee Stock Ownership Program	3,130,900	1.59%
STATE STREET BANK WEST CLIENT-TREATY 505234 (Standing proxy: Settlement & Clearing Services Department, Mizuho Bank, Ltd.)	2,851,740	1.45%
Sumitomo Mitsui Banking Corporation	2,502,800	1.27%
Total	72,966,940	37.04%

Note: In addition to the above, JR Central holds 8,999,232 shares of treasury stock.

[As of March 31, 2023]

For more information, please visit the following:

- Safety Report <https://company.jr-central.co.jp/others/report/>
- Linear Chuo Shinkansen <https://linear-chuo-shinkansen.jr-central.co.jp/>
- Fact Sheet <https://company.jr-central.co.jp/ir/factsheets/>

URL : <https://jr-central.co.jp> Tel:(052)564-2413/Fax:(052)587-1300
E-mail : ir.msds@jr-central.co.jp